

Fletcher
Insulation

Building Better, Together



**3-in-1 multipurpose
sarking solution**

Sisalation® Foam Cell Multipurpose

Insulation + Thermal Break + Vapour Barrier for roof and wall systems

Sisalation® Foam Cell Multipurpose

Sisalation® Foam Cell Multipurpose is a 3-in-1 reflective sarking insulation incorporating a closed cell foam core encapsulated between an upper and lower layer of reflective foil laminate. An anti-glare coating is applied to one side of the composite to reduce the level of glare experienced during installation.

Suitable for use in a vast array of residential and commercial applications, Sisalation® Foam Cell Multipurpose provides excellent insulation properties as it reflects up to 95% of the sun's radiant heat thereby allowing for cooler internal conditions.

Sisalation® Foam Cell Multipurpose achieves a material R-value of R0.25 deeming it suitable for use as a thermal break for steel framed constructions in accordance with National Construction Code (NCC) requirements. When installed correctly, Sisalation® Foam Cell Multipurpose will act as an effective water and vapour barrier and will aid in minimising the risk of condensation.

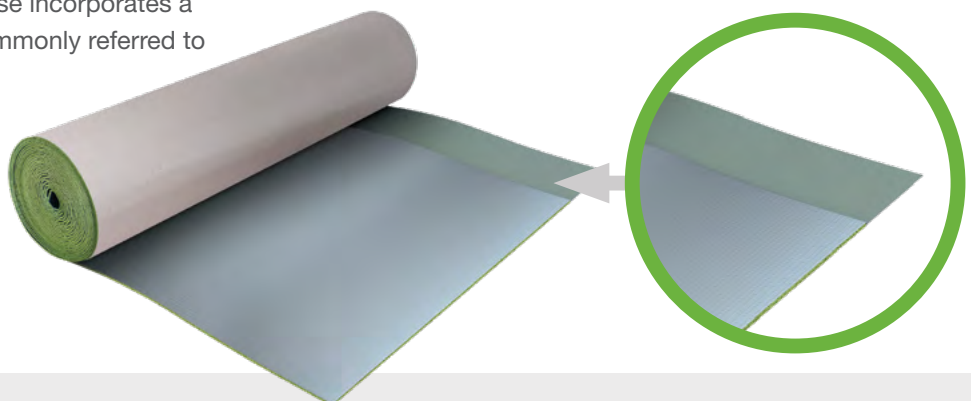
Additionally, Sisalation® Foam Cell Multipurpose achieves an 'Extra Heavy Duty' rating in accordance with Table 1 of AS/NZS 4200.1, thus providing maximum durability and increased tear resistance. Refer to www.insulation.com.au for further information.

Key features and benefits

3-in-1 insulation solution	Provides an effective insulation, thermal break, and vapour barrier.
Extra Heavy Duty rating	Offers maximum strength, durability and increased tear resistance.
Material R-value of R0.25	Suitable as a thermal break in steel framed construction in accordance with NCC requirements.
Reflects up to 95% radiant heat	Allows for cooler internal conditions in hot, humid climates and minimises the risk of condensation.
Reflective 150mm foil overlap	Maximises coverage, reduces waste and provides cost savings. Minimises the need to tape joints and allows for sealed edge protection which improves aesthetics in exposed applications.
Anti glare coating on one side	Reduces the level of glare during product installation providing additional safety.
Closed cell foam core	Fibre free and non-allergenic Insulation.
Suitable for commercial and residential buildings	Ideal for a broad range of applications.
BAL Compliant	Peace of mind that Sisalation® Foam Cell Multipurpose meets AS 3959 requirements.
Group 2 Fire Rating	Suitable for use as an exposed wall or ceiling lining in many applications.

Reflective foil overlap

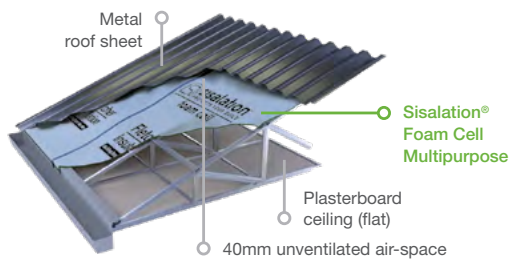
Sisalation® Foam Cell Multipurpose incorporates a 150mm reflective foil overlap, commonly referred to as 'the lap' along one side edge.



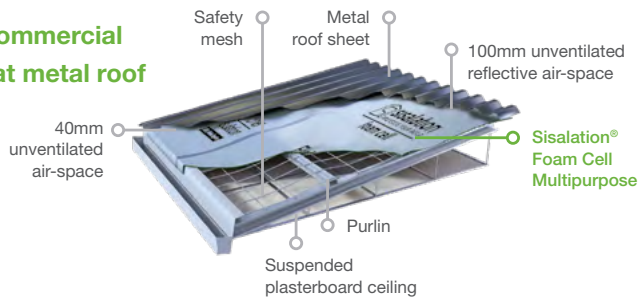
Thermal system properties

	Heat Flow Summer	Heat Flow Winter
Residential metal roof		
Flat ceiling, naturally ventilated*	R2.6	R1.2
Flat ceiling, unventilated*	R2.3	R1.4
Commercial flat metal roof		
Suspended ceiling, unventilated*	R2.3	R1.4
Steel framed wall		
Plasterboard lining, unventilated*	R1.3	R1.3
Double brick cavity wall		
Unventilated	R1.7	R1.7

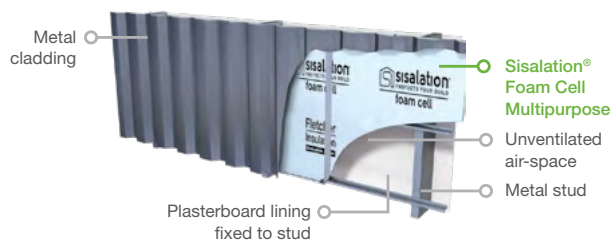
Residential metal roof



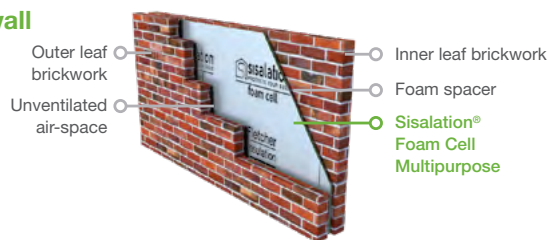
Commercial flat metal roof



Steel framed wall

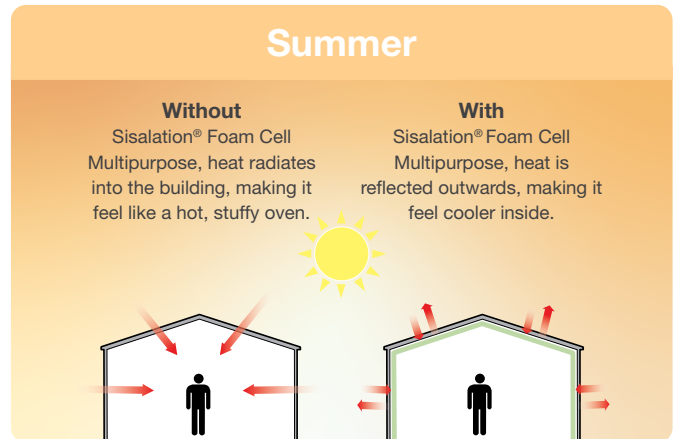


Double brick cavity wall

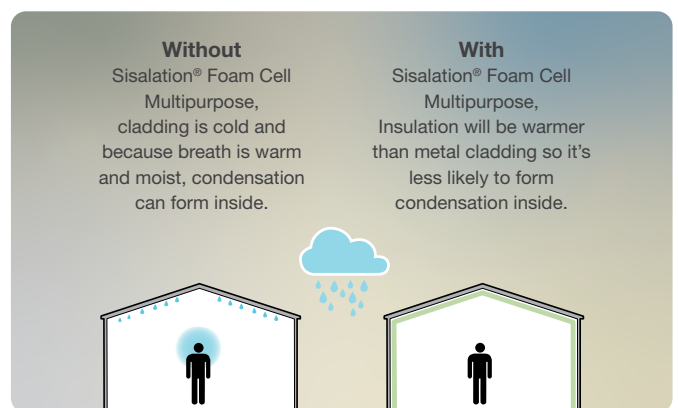
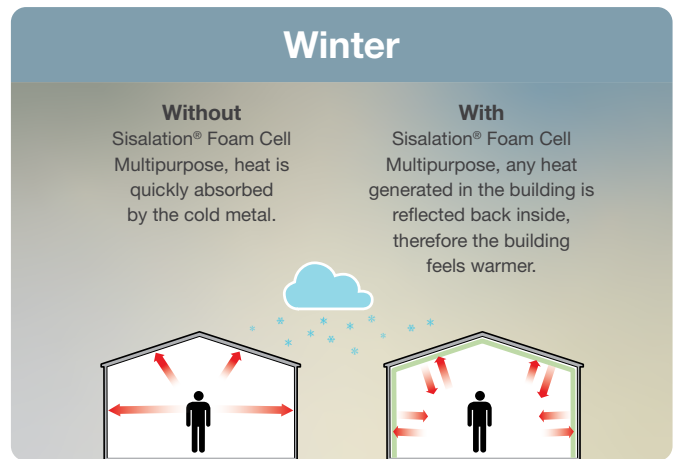


*Refer to the relevant diagram for additional construction details. To be installed in accordance with Fletcher Insulation installation guidelines.

Note: the declared Total R-values have been calculated in accordance with the methods outlined in AS/NZS 4859.2. The contribution of this product to the Total R-value depends on installation and environmental conditions which includes the effect of dust. The Total R-value will be reduced in the event of the accumulation of dust on upward facing surfaces and in those cavities that are ventilated.



In summer, **Sisalation® Foam Cell Multipurpose** helps keep the heat out. Metal roofs can exceed 80°C causing heat to radiate into uninsulated buildings. Foam Cell Multipurpose greatly reduces this radiation and helps make the building feel much cooler compared to an uninsulated building.



In winter, cold, uninsulated walls quickly remove any heat generated in a building. **Sisalation® Foam Cell Multipurpose** will reduce this heat transfer and help make the building feel warmer. It will also reduce the risk of condensation by providing an insulating layer between potentially warm, moist air and the cold wall.

Product data

Sisalation® Foam Cell Multipurpose reflective insulation is manufactured to the highest quality standards. Stringent quality and environmental management systems ensure product and process excellence.

Material R-Value m ² K/W	Thickness mm	Width mm	Overlap mm	Length mm	Area per roll m ²	Nominal weight kg	Product code
0.25	8.4	1350	150	22.25	30	14	395264

Physical properties

Property	Test Method/Standard	Result
Material Thermal Resistance (m ² K/W)	ASTM C518	R0.25
Flammability Index	AS 1530.2	≤ 5
Group Number	AS 5637	2
Early Fire Hazard Indices		
Ignitability Index	AS/NZS 1530.3	0
Spread of Flame		0
Heat Evolved Index		0
Smoked Developed Index		1
Vapour Control	AS/NZS 4200.1	Class 1 Vapour Barrier
Water Control	AS/NZS 4201.4	Water Barrier
Emittance (reflective face)	AS/NZS 4201.5	IR Reflective (0.03)
Emittance (anti-glare face)	AS/NZS 4201.5	IR Semi-reflective (0.06)
Duty Rating	AS/NZS 4200.1 Table 1	Extra Heavy

Environmental properties

No ozone depleting substances were used in the manufacture or composition of Sisalation® Foam Cell Multipurpose. Specification of Sisalation® Foam Cell Multipurpose guarantees the use of ODP free insulation while also ensuring that no harmful levels of Volatile Organic Compounds (VOCs) are released. This allows for the incorporation of environmentally preferable insulation whilst also maintaining indoor air quality.

Technical specification

The insulation shall be Sisalation® Foam Cell Multipurpose with a Material R-value of 0.25 and an Extra Heavy Duty rating in accordance with AS/NZS 4200.1.



© Fletcher Insulation Pty Limited 2022. Fletcher Insulation reserves the right to change product specifications without prior notification. Information in this publication and otherwise supplied to users as to the subject product is based on our general experience and is given in good faith, but because of the many particular factors which are outside our knowledge and control and affect the use of products, no warranty is given or is to be implied with respect to either such information or the product itself, in particular the suitability of the product for any particular purpose. The purchaser should independently determine the suitability of the product for the intended application. The colour PINK, Pink® and Pink Batts® are registered trademarks of Owens Corning Intellectual Capital, LLC used under licence by Fletcher Insulation. FBS-1 Glasswool Bio-Soluble Insulation® is a registered trademark of ICANZ. Unless otherwise stated all ™ and ® are trademarks and registered trademarks of Fletcher Insulation Pty Limited ABN 72 001 175 355. BR29_Revision_4_Issue_Date_01112022.

Customer Service Phone
1300 654 444
Email: info@insulation.com.au
www.insulation.com.au